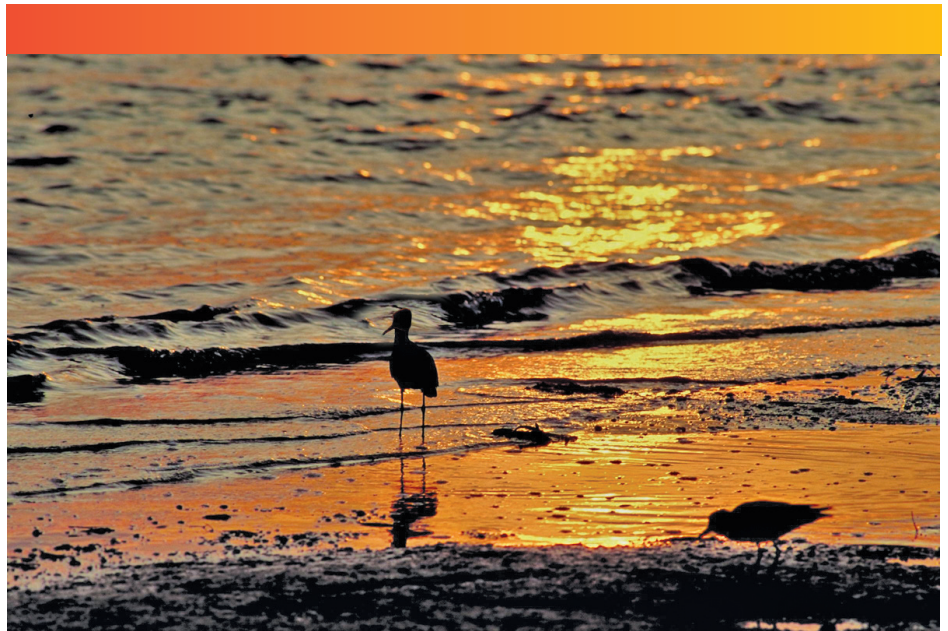


GIVE US YOUR BEST SHOT!

1st Annual Mattie Kelly Environmental Symposium on Choctawhatchee Bay

Amateur Photo Contest

The Mattie M. Kelly Cultural & Environmental Institute and the Choctawhatchee Basin Alliance are pleased to announce their 2008 Amateur Photo Contest for the 1st Annual Mattie Kelly Environmental Symposium on Choctawhatchee Bay. Winning entries will be published in a 2009 calendar & posted on both websites.



MATTIE M. KELLY CULTURAL & ENVIRONMENTAL INSTITUTE



AT OKALOOSA - WALTON COLLEGE

**FIRST PLACE
PRIZE: \$250**

**SECOND PLACE
PRIZE: \$150**

**THIRD PLACE
PRIZE: \$100**

For official photo contest entry form and rules please visit:

www.owc.edu/mattiekellyinstitute/env-symposium.cfm

The Mattie M. Kelly Cultural & Environmental Institute and the Choctawhatchee Basin Alliance, located at Okaloosa-Walton College, will hold the 1st Annual Mattie Kelly Environmental Symposium on Choctawhatchee Bay on June 1st & 2nd, 2008. Winning entries will be published in a 2009 calendar and displayed during the symposium. For more information about the symposium, please visit the website listed below.

Entry Procedures and Rules:

- All contestants must be amateurs.
- Limited to three (3) entries per single contestant.
- Photos can be of any environmental subject but should be realistic representations of the natural heritage of the Choctawhatchee watershed.
- Contestants must submit an 8 x 10 framed print, a digital image (high resolution image at least 300 dpi) of that print on CD, & a completed entry form available online.
- Photos will become the property of OWC and not be returned. Please do not submit an original copy.
- Entries must be submitted by the original amateur photographer.
- Entries must be received by May 1, 2008 at 5:00 p.m. CST.
- Mail or deliver entries to:

Mattie M. Kelly Cultural & Environmental Institute
c/o Dr. Allison Beauregard
100 College Blvd.
Niceville, FL 32578
ATTN: photo contest

EA/EO